



Royal Roads
UNIVERSITY

OFFICE OF RESEARCH NEWSLETTER

Research Calls and Funding Opportunities

January 24, 2025

[FUNDING OPPORTUNITIES](#)

[TRI-AGENCY FUNDING OPPORTUNITIES](#)

[SPOTLIGHT](#)



'Blow, blow, thou winter wind' by Frank van Dongen is used under [Creative Commons license CC BY-NC-ND 2.0](#).

Funding and Award Opportunities

Call for Applications 2025-26 Research and Professional Development Pool
(RPD) Competition

Application deadline: February 15, 2025 at 11:59 pm

Value: Up to \$4,000

Duration: 1 year

Attention full-time RRU Faculty Association (RRUFA) Members:

The 2025-26 Research and Professional Development Pool (RPD) competition is now open. As per Section 31.5 (a, ii) of the [RRUFA Collective Agreement](#), “The Research and Professional Development Pool is a consolidated account solely for the use of full-time Members for all expenses related to scholarly advancement, including travel expenses, attendance at conferences, and travel and related expenses for research activities.”

[Application guidelines and application form](#)

The application deadline is 11:59pm on February 15, 2025. Late applications or applications not submitted through the [Internal Awards inbox](#) will not be accepted. Note that, if February 15th falls on a weekend or STAT holiday, applications will be due the following business day at 11:59pm.

The RPD Guidelines and application form can be found [here on the Research Services website](#).

Applications must consist of one (1) word or PDF document and be submitted to the Research and Professional Development Panel via [the RRU Internal Research Grants inbox](#).

The award term starts April 1, 2025 and ends March 31, 2026 Note that *no funds may be spent before the start date*.

[Eligibility](#)

All full-time Royal Roads faculty Association (RRUFA) members including librarians may apply.

Faculty members may normally hold only **one** RPD grant at a time. Final reports for previously funded RPD awards are required in order to receive new funds. Please contact [the RRU Internal Research Grants Coordinator](#) for report information.

If you have any questions, concerns or need support, [please contact the Internal Research Grants Coordinator](#).

Call for Applications 2025-26 Allan Cahoon Global Advancement and Diversity Fund (GAD) Competition

Application deadline: February 15, 2025 at 11:59 pm

Value: Up to \$4,000

Duration: 1 year

Attention Royal Roads staff and faculty members:

The 2025-26 Allan Cahoon Global Advancement and Diversity Fund (GAD) competition is now open. The fund supports three initiatives: one for students and two for faculty and staff.

The opportunities for faculty and staff alternate depending on the year. This year the call is specifically for a Centre for Dialogue-based event. The event is hosted by the university and led by core faculty or permanent staff. The event may incorporate resources of the Centre for Dialogue and draw on contemporary thought leadership promoting diversity, inclusivity and opportunity, consistent with the university's diversity statement, with particular emphasis on gender, sexual orientation and Indigenous culture.

[Application guidelines and application form](#)

The application deadline is 11:59pm on February 15, 2025. Late applications or applications not submitted through the [Internal Awards inbox](#) will not be accepted. Note that, if February 15th falls on a weekend or STAT holiday, applications will be due the following business day at 11:59pm.

The GAD Guidelines and application form can be found [here on the Research Services website](#).

Applications must consist of one (1) word or PDF document and be submitted to the Research Advisory Committee (RAC) via [the RRU Internal Research Grants inbox](#).

The award term starts April 1, 2025 and ends March 31, 2026. Note that *no funds may be spent before the start date*.

[Eligibility](#)

All current core faculty or permanent staff members may apply.

Faculty members may normally hold only **one** GAD grant at a time. Final reports for previously funded GAD awards are required in order to receive new funds. Please contact [the RRU Internal Research Grants Coordinator](#) for report information.

If you have any questions, concerns or need support, [please contact the Internal Research Grants Coordinator](#).

Call for Applications 2025-26 Buttedahl and Skene Learning and Teaching Innovation Fund (BSF) Competition

Application deadline: February 15, 2025 at 11:59 pm

Value: Up to \$2,000

Duration: 1 year

Attention Royal Roads University faculty members:

The 2025-26 Buttedahl and Skene Learning and Teaching Innovation Fund (BSF) competition is now open. This award honours Bob Skene and Dr. Paz Buttedahl, and supports projects related to their joint commitment to enhancing teaching and learning at Royal Roads. The fund supports faculty members to make direct links between scholarship, teaching effectiveness, research, and student learning.

[Application guidelines and application form](#)

The application deadline is 11:59pm on February 15, 2025. Late applications or applications not submitted through the [Internal Awards inbox](#) will not be accepted. Note that, if February 15th falls on a weekend or STAT holiday, applications will be due the following business day at 11:59pm.

The BSF Guidelines and application form can be found [here on the Research Services website](#).

Applications must consist of one (1) word or PDF document and be submitted to the Research Advisory Committee (RAC) via [the RRU Internal Research Grants inbox](#).

The award term starts April 1, 2025 and ends March 31, 2026. Note that *no funds may be spent before the start date*.

Eligibility

All current core faculty may apply.

Faculty members may normally hold only **one** BSF grant at a time. Final reports for previously funded GAD awards are required in order to receive new funds. Please contact [the RRU Internal Research Grants Coordinator](#) for report information.

If you have any questions, concerns or need support, [please contact the Internal Research Grants Coordinator](#).

Call for Proposals: *Health Research BC - Advancing the Use of Evidence in Seniors' Home and Community Care program*

Timeline:

Letter of Intent(LOI) deadline	Late March 2025
Anticipated notice of LOI funding decision	Late April 2025
Full application deadline	Mid-October 2025
Anticipated notice of full application funding decision	Late December 2025
Development award term	Six months (May – October 2025)
Team award term	Three years (January 2026 – December 2028)

Development award value: Up to \$50,000

Full award value: Up to \$7 million to fund one team award in each health authority region over three years, with the possibility of one additional multi-regional or cross-cutting project.

Duration: 3 years

The Michael Smith Health Research BC's Advancing the Use of Evidence in Seniors' Home and Community Care program addresses population aging, one of [four broad themes](#) identified through Health Research BC's priority-setting process.

The program aims to improve home and community care for seniors through a blend of supporting both implementation of evidence-based interventions in seniors' home and community care and learning across health authorities, academic institutions, and communities.

It supports teams of researchers and research users within the BC health system and academia to implement and evaluate outcomes of evidence-based interventions in seniors' home and community care. It also contributes to and supports a culture of learning and evidence use within the BC health system, addressing the needs of seniors, communities and decision-makers.

The program is made possible through our research funding programs and the [BC SUPPORT Unit](#).

The Advancing the Use of Evidence in Seniors' Home and Community Care program will be funded through two stages:

1. Letter of intent for development award
2. Full application for team award

Letter of intent for development award

- The primary applicant must be affiliated with an eligible BC health authority. Applicants must submit a letter of intent (LOI). They must identify and justify their selection of the evidence-based intervention in seniors' home and community care that they intend to implement.
- Applicants are encouraged to consider equity and how to include the perspectives of diverse communities and people with lived experience and community members in all aspects of their work.
- Development awards of up to \$50,000 (with the possibility of up to \$75,000 in exceptional cases) are available for a six-month term.
- Funds are available to support development awards across British Columbia. We aim to fund one or two development awards in each health authority region.
- Separate funding pools will be available for applications in Fraser Health, Interior Health, Island Health, Northern Health and Vancouver Coastal Health regions, along with a pool for multi-regional or cross-cutting projects, if needed.
- Successful applicants from the LOI stage will receive development awards to support primary applicant co-leads, evaluation co-leads and health authority executive sponsors to develop plans to implement and evaluate an evidence-based intervention in seniors' home and community care. They will also build their multidisciplinary teams (including healthcare decision-makers, healthcare providers, researchers, trainees and people with lived experience) to support the work.

Full application for team award

- Development award recipients will be invited to submit a full application.
- Successful applicants at the full application stage will receive team awards to carry out activities to implement interventions and evaluate both intervention and implementation outcomes.
- Award funds should be used primarily for the outcomes evaluation, but a portion of the budget may be used to support some implementation-related costs with sufficient justification.
- Health Research BC has committed up to a total of \$7 million to fund one team award in each health authority region over three years, with the possibility of one additional multi-regional or cross-cutting project.

For more information: [Visit the Health Research BC webpage](#)



'Just ducky' by Sue Thompson is used under [Creative Commons license CC BY-ND 2.0](#).



*Call for proposals: SSHRC, CIHR and Michael Smith Health Research BC
Research on Research Joint Initiative*

Proposal deadline: February 20, 2025

Value: Up to \$200,000

Duration: 3 years

Research on research, also known as metaresearch, is the application of rigorous methods and analysis to the practice of research itself—its methods, standards and evaluation (see expanded definition below). Founded in 2019, the Research on Research Institute (RoRI) is a consortium of research funders and institutes that undertakes projects that can support the work of funding organizations. RoRI gathers evidence and data; undertakes experiments; and develops tools to improve how research is funded, practiced, communicated and evaluated.

The three Canadian core partners of RoRI—SSHRC, the Canadian Institutes of Health Research (CIHR) and Michael Smith Health Research BC—have together launched this joint initiative as part of ongoing efforts to support metaresearch in the Canadian context. The goal of this joint initiative is to enhance national capacity for metaresearch, and bring Canadian expertise and perspectives into the international dialogue on improving research funding practices. Metaresearch is a vital element of social sciences and humanities research, as well as multidisciplinary research, as it allows greater insight into the ways in which research is conducted, evaluated and supported.

For the purposes of this joint initiative, metaresearch (also known in different contexts as research on research, metascience or the science of science) is defined as a field of research that draws on old and new disciplinary and methodological approaches to test, evaluate and experiment with different aspects of research systems, cultures and decision-making. It aims to ensure the full potential of research can be realized in ways that are rigorous, transparent, fair and evidence-informed. Metaresearch can be conducted by researchers in any disciplinary field.

This joint initiative aims to:

- build knowledge and understanding on metaresearch, i.e., the application of rigorous methods and analysis to the practice of research itself—its methods, incentives, standards and evaluation—and the practices of how that research is funded, communicated, applied and evaluated
- produce data on metaresearch that may have impacts on research and innovation policy and funding practices in Canada and other jurisdictions
- take part in knowledge mobilization among Canadian and international researchers, including members of RoRI's consortium, to contribute to the development of research and innovation policies and research funding practices;
- provide training for students and highly qualified personnel
- build collaborations among researchers working on metaresearch, both in Canada and internationally

Applications that align with [RoRI priority areas](#) as identified in the list of current RoRI projects (whether or not directly linked to those current [RoRI projects](#)) are welcome in this joint initiative, but the alignment is not mandatory.

Applicants are invited to submit applications dealing with metaresearch in any disciplinary context. Possible research areas supported within the objectives of this joint initiative may include (but are not limited to):

- research on talent and professional development, including studying the effectiveness of interventions in: training and skills, talent retention, encouragement of entrepreneurship, and/or training and professional development assessment methods in research contexts
- research on allocation of research funding, including different peer review methodologies and different modes of funding (e.g., scholarships, fellowships, research grants), and their impacts on the distribution of research funds and associated research and career outcomes
- research integrity, including issues of reproducibility and the impact of interventions such as preregistration, open data, research data management, and reproducible code
- research on research infrastructure, including physical, digital and human infrastructures
- improving the dissemination of research outputs and their impact, including the role of technology transfer offices, varying publication practices, conferences and knowledge dissemination platforms
- understanding research impact, including improving the nuance with which the impact of research projects and programs can be defined and measured, and under what conditions various approaches to research facilitate meaningful use of evidence
- understanding the impacts of AI on the research ecosystem

SSHRC welcomes applications involving Indigenous research, as well as those involving research-creation.

Subject matter

Proposals may be led by researchers from any discipline, and may involve any disciplines, thematic areas, approaches or subject areas, provided the primary discipline and objective of the proposal is metaresearch.

Projects whose primary objective is curriculum development, preparation of teaching materials, organization of a conference or workshop, digitization of a collection or creation of a database are not eligible for funding under this funding opportunity.

For more information: [Visit the Research on Research Joint Initiative web page](#)

Call for proposals: SSHRC Partnership Engage Grants

Proposal deadline: March 15, 2025

Value: \$7,000 to \$25,000

Duration: 1 year

Partnership Engage Grants provide short-term and timely support for partnered research activities that will inform decision making at a single partner organization from the public, private or not-for-profit sector. The small-scale, stakeholder-driven partnerships supported through Partnership Engage Grants are meant to respond to immediate needs and time constraints facing organizations in non-academic sectors. In addressing an organization-specific need,

challenge and/or opportunity, these partnerships let non-academic organizations and postsecondary researchers access each other's unique knowledge, expertise and capabilities on topics of mutual interest.

Partnership Engage Grants are expected to respond to the objectives of:

- the [Insight program](#) (to build knowledge; support new approaches to research; provide research training for students; fund research expertise that relates to societal challenges and opportunities; and mobilize research knowledge) and
- the [Connection program](#) (to share research knowledge; increase accessibility of research knowledge among all audiences; build reciprocal relationships among researchers; develop research networks and tools; and to make those networks and tools available to non-academic audiences.) However, Partnership Engage Grants cannot respond exclusively to the objectives of the Connection program.

SSHRC welcomes applications involving [Indigenous research](#), as well as those involving [research-creation](#).

See SSHRC's [Partnerships Tool-Kit](#) to assist in the planning and implementation of your partnership.

Types of partnerships

Following are some possible formal partnership approaches. Applicants are in no way limited to these approaches and are welcome to combine some of the features described below.

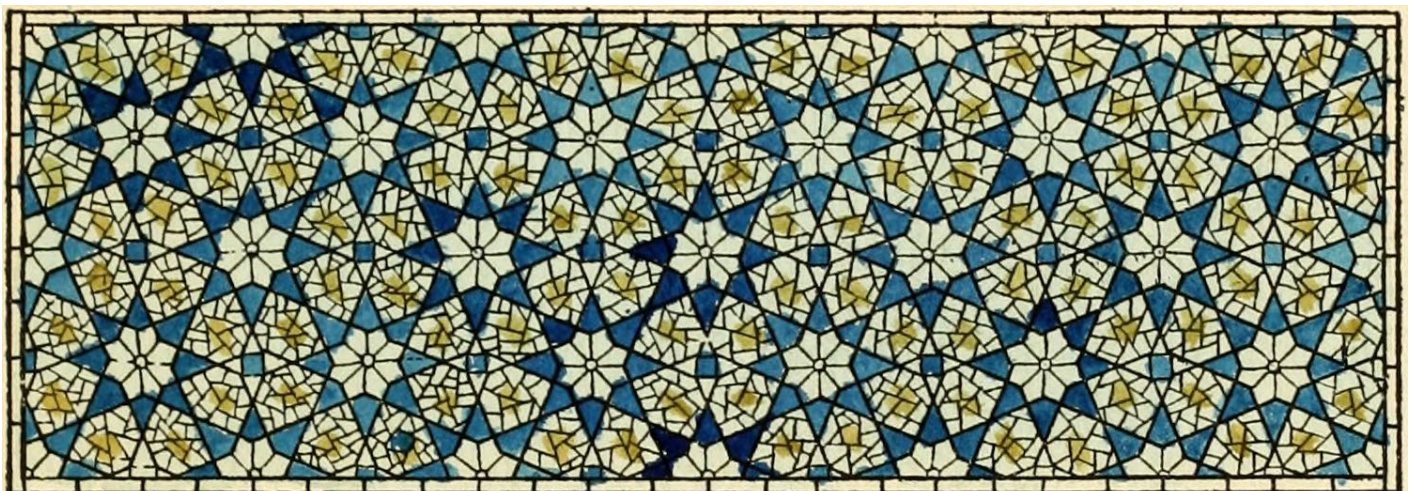
- **Cross-sector co-creation of knowledge and understanding:** Partnerships to foster innovative research, training and the co-creation of new knowledge on critical issues of intellectual, social, economic and cultural significance.
- **Partnered knowledge mobilization:** Partnerships designed to synthesize, apply and mobilize new and existing social sciences and humanities research knowledge in accessible ways to build institutional capacity and to increase the national and international impact and stature of Canadian research.

Partner organizations

Only one Canadian or international organization from the public, private or not-for-profit sector can be involved as a partner organization. Postsecondary institutions and scholarly associations are not eligible as partner organizations. Organizations collaborating with postsecondary institutions can be considered eligible as long as they are a separate entity from the postsecondary institution (i.e., a stand-alone organization in the non-profit, private or public sector). The partner organization must be at arm's length (independent) from the academic institution and the applicant.

For more information:

[Visit the SSHRC Partnership Engage Grants web page](#)



Call for proposals: SSHRC Connection Grants

Application deadline: May 1, August 1, and September 1, 2025

Value: Events: \$7,000 to \$25,000
Outreach activities: \$7,000 to \$50,000

Duration: 1 year

Connection Grants support events and outreach activities geared toward short-term, targeted [knowledge mobilization](#) initiatives. These events and activities represent opportunities to exchange knowledge and to engage with participants on research issues of value to them. Events and outreach activities funded by a Connection Grant can often serve as a first step toward more comprehensive and longer-term projects. Connection Grants are expected to respond to the objectives of the [Connection program](#).

Connection Grants support workshops, colloquiums, conferences, forums, summer institutes, or other events or outreach activities that facilitate:

- disciplinary and/or interdisciplinary exchanges in the social sciences and humanities;
- scholarly exchanges between those working in the social sciences and humanities and those working in other research fields;
- intersectoral exchanges between academic researchers in the social sciences and humanities and researchers and practitioners from the public, private and/or not-for-profit sectors; and/or
- international research collaboration and scholarly exchanges with researchers, students and non-academic partners from other countries.

Proposed events and outreach activities

- All activities must take place within 12 months of the start date indicated on the notice of award (see decision dates in the [funding cycle schedule](#)).
- Proposed events and outreach activities must produce timely and concrete deliverables, such as conference proceedings or other knowledge products developed for traditional formats and/or employing digital and/or multimedia formats (unless specifically intended to create new, longer-term linkages or to initiate collaboration).
- Proposed events and outreach activities can be one-time encounters or catalysts designed to lead to longer-term partnerships and/or sustained programs of scholarly research.

SSHRC welcomes applications involving [Indigenous research](#), as well as those involving [research-creation](#). To this regard, for Connection Grants support **events and outreach activities** related to research-creation and Indigenous research.

Research Data Management Capacity Building Initiative

Through this initiative, SSHRC will fund at least 10 meritorious Connection Grant proposals per competition to support the social sciences and humanities research community develop and adopt research data management standards, tools and skills. Learn more about the [Research Data Management Capacity Building Initiative](#). Candidates must indicate that they wish to be considered for an initiative, and explain why, in their application form.

For more information: [Visit the SSHRC Connection Grants web page](#)

Call for proposals: SSHRC Destination Horizon Grants

Proposal deadline: May 22 and September 22, 2025

Value: Up to \$15,000

Duration: 1 year

SSHRC has launched a new funding opportunity: [Destination Horizon Grants](#). Valued at \$15,000 for one year, these grants are intended to support researchers affiliated with eligible Canadian postsecondary institutions to build capacity, foster existing partnerships, and further develop networks and/or consortia with European Union and other “associated countries” researchers, with the ultimate goal of applying to [Horizon Europe](#)—Pillar II calls for proposals.

This funding opportunity follows [the agreement signed by the Government of Canada and the European Commission](#) allowing for increased Canadian participation in Horizon Europe under Pillar 2. This agreement provides Canadians with greater access to Horizon Europe.

Please note that a postsecondary institution may only submit up to three Destination Horizon Grant applications for a given deadline. All applications deemed eligible will be entered into a randomized selection process to determine awards. An eligible application that is not randomly selected for an award may be resubmitted for a future competition.

Description

Destination Horizon Grants support researchers affiliated with eligible Canadian postsecondary institutions to build capacity, foster existing partnerships, and further develop networks and/or consortia with European Union and other “associated countries” researchers, with the ultimate goal of applying to Horizon Europe—Pillar II calls for proposals.

Horizon Europe is the EU’s key funding program for research and innovation, with a budget of €95.5 billion. It offers significant opportunities to access new knowledge, partners, markets, customers and suppliers. In November 2023, the Government of Canada closed substantive negotiations with the European Commission to join Horizon Europe as an associated country under Pillar II: Global challenges and European industrial competitiveness. While Canadians could previously participate in all Horizon Europe calls that were open to international partners, they would have had to largely secure their own funding to participate in a given project. With associated country status, Canadians can now access funding directly from the EU.

Destination Horizon Grants proposals are expected to respond to the objectives of the [Research Partnerships program](#), which are to:

- strengthen knowledge and understanding by leveraging perspectives from across multiple disciplines and sectors;
- support collaboration among postsecondary institutions, and between postsecondary institutions and organizations from the public, private and not-for-profit sectors, to co-create knowledge and increase use of research outputs;
- mobilize research knowledge, within academia and other sectors, that can lead to intellectual, cultural, social and economic outputs and outcomes;
- increase the accessibility and use of research knowledge within and beyond the postsecondary sector; and
- support a high-quality training experience for students and/or postdoctoral researchers.

Destination Horizon Grants are not intended to support implementation of Horizon Europe projects. Instead, the grants support activities between researchers that facilitate:

- disciplinary and/or interdisciplinary exchanges;
- scholarly exchanges;

- intersectoral exchanges between academic researchers and practitioners from the public, private and/or not-for-profit sectors; and/or
- international research collaboration and scholarly exchanges between researchers affiliated with Canadian postsecondary institutions and researchers, students and non-academic partners from the EU and other associated countries.

Note that SSHRC will not fund the full cost of any Destination Horizon Grant. Additional support in the form of eligible cash contributions equivalent to 100% of the amount requested from SSHRC must come from the host institution.

Eligibility

Most SSHRC funding is awarded through open competitions. Proposals can involve any disciplines, thematic areas, approaches or subject areas eligible for SSHRC funding. See the [guidelines on subject matter eligibility](#) for more information.

Projects whose primary objective is to conduct research activities (e.g., literature reviews, field work, data collection, interviews) are not eligible for funding under this funding opportunity.

To be eligible for this funding opportunity, applicants must demonstrate:

- their eligible affiliation and primary affiliation in the social sciences or humanities;
- their readiness to further develop networks and/or consortia with EU and other associated countries' researchers, with the ultimate goal of applying to a Horizon Europe—Pillar II call;
- eligible budget requests; and
- 100% matching cash contributions from the host institution.

Applications can be submitted by an individual researcher or a team of researchers (consisting of one applicant and one or more co-applicants and/or collaborators). Postdoctoral researchers and students are not eligible for applicant or co-applicant status for a Destination Horizon Grant.

For more information: [Visit the SSHRC Destination Horizon Grants web page](#)

See all [upcoming SSHRC deadlines here](#), and the [integrated calendar of agency and interagency funding opportunities here](#).

Questions about your author rights, publishing, or promoting your research?

Contact [Cassandra Larose](#), Scholarly Communications Librarian, at 250-391-2600, ext. 4324.

Questions about your data management plan?

Contact [Amber Gallant](#), Data Services Librarian, at 250-391-2600, ext. 4433.

If you are interested in any of the above funding opportunities:

Please contact the [Office of Research Services](#) and we will assist you in the development of your proposal.

Please note that the principal investigator for any grant application submitted through Royal Roads University must be a core faculty member at RRU.



Spotlight

Equity, Diversity, and Inclusion in Research: Looking ahead to Black History Month

February is Black History Month, a time when people in Canada celebrate the many achievements and contributions of Black Canadians and their communities who, throughout history, have done so much to make Canada a culturally diverse, compassionate, and prosperous country. In December 1995, the House of Commons officially recognized February as Black History Month in Canada, carrying the motion unanimously.

Royal Roads University celebrates the legacy, achievements and experiences of Black Canadians in our university community and beyond.

[Visit the RRU Black History Month web page](#) for upcoming events, cultural and educational resources, and recordings of speaker events in 2024.

Questions about anything in the Research e-bulletin? Contact the [Office of Research Services](#)