



Royal Roads
UNIVERSITY

OFFICE OF RESEARCH

NEWSLETTER

Research Calls and Funding Opportunities

December 6, 2024

[FUNDING OPPORTUNITIES](#)

[TRI-AGENCY FUNDING OPPORTUNITIES](#)

[SPOTLIGHT](#)



'Winter Morning in Front of the City IV' by Heise Bunse is used under [Creative Commons license CC BY-SA 2.0](#).

Funding and Award Opportunities

Call for applications: *WorkSafe BC research grants*

Application deadline: January 3, 2025

Grant	Value	Duration
Applied Innovation grants	Up to \$50,000	1 year
Proof of Principle and Prototyping grants	Up to \$100,000 total	2 years
Exploratory Research grants	Up to \$125,000 per year	2 years

Our Innovation funding stream supports research ideas that may lead to innovative solutions and knowledge creation for problems related to occupational health and safety and work disability. The Innovation funding stream currently consists of three funding opportunities.

Applied Innovation grants

Applied Innovation grants support small-scale, shop-floor research projects that lead to the development of practical knowledge and solutions that can be implemented in the workplace. The intent of this funding stream is to bridge the gap between theoretical research and practical application of solutions and interventions that can make a real difference in workplaces.

Applied Innovation supports research that builds on existing knowledge and technologies and applies them in innovative ways. Typically, the outcomes from projects in this stream include novel programs, procedures, frameworks, or methodologies that can be used to address a health and safety or work disability problem. Research activities may include administering surveys, running focus groups, assessing risks in the workplace, developing programs and procedures, and impact assessments.

Proof of Principle and Prototyping grants

Proof of Principle and Prototyping is dedicated to research that may lead to novel tools and technology that can be used in workplaces to improve health and safety or work disability. A Proof of Principle and Prototyping project must be in the early stages of development—it may include proof of principle or concept; analytic or laboratory studies; or validation of concepts, tools, and technology.

Projects should not be so advanced that the tool or technology is ready for commercialization. The Government of Canada's [Technology Readiness Levels \(TRLs\) scale](#) is used to determine the maturity level of a technology. TRLs are based on a scale from 1 to 9, with 9 being the most technologically mature. Proof of Principle and Prototyping projects must fit within levels 1 to 6 of the TRLs.

The outcomes from projects in this stream typically include mobile applications, gadgets, prototype tools, software, or novel processes. Examples of research activities include developing, refining, and implementing designs; verifying application; conducting field studies; preparing demonstrations; building prototypes; performing beta testing; piloting a new process amongst workers; and conducting efficacy or safety trials.

Exploratory Research grants

Exploratory Research is a new funding stream within Innovation supporting exploration of occupational health and safety and work disability challenges through a new lens, bringing together non-traditional disciplines and interdisciplinary teams of researchers, workers, and employers to create bold and lasting effects. This stream is meant for high-risk/high-reward research that investigates new areas of scientific inquiry and challenges current paradigms.

Funding under this stream is intended for early-stage projects that have potential to disrupt conventional thinking and lead to significant advancements or breakthroughs. The outcomes from this stream are not restricted to any specific type of intervention and could include a novel tool, technology, program, or method that revolutionizes how a particular occupational health and safety or work disability problem is currently viewed and addressed.

Research Priorities

The annual research priorities are informed by WorkSafeBC's five-year strategic plan to ensure alignment with the strategic goals of the organization. Each year, Research Services consults with internal and external stakeholders to identify key research priorities to serve both current and emerging issues.

Strategic alignment	Research priorities
Prevent workplace injury, disease and death	<ul style="list-style-type: none"> • Preventing psychological injuries, bullying and harassment, and workplace violence • Reducing occupational exposures to workplace hazards and risks • Reducing incidence of serious injury, occupational disease and death • Encouraging worker engagement, and a culture of safety leadership in workplaces • Innovative approaches for the prevention of injury, disease and death • Assessing the impact of climate change on workers, employers and workplaces including new and emerging hazards, and exposures
Maximize recovery and post-injury earnings	<ul style="list-style-type: none"> • Effective tools, interventions and disability management models (focus on mental health disorders) • Evidence based medical and rehabilitative interventions (focus on chronic pain, opioid management, mental health disorders, head and brain injuries) • Evidence based occupational disease etiology, treatment and management • Innovations in rehabilitation and service delivery
Provide comprehensive insurance coverage for workplaces and Deliver stakeholder-centric and inclusive services	<ul style="list-style-type: none"> • Adapting to the changing nature of the work (focus on gig economy workers, precarious employment, impact of new technologies) • Investigating inclusivity and diversity components within all aspects of the Workers Compensation system to ensure programs and services meet individual needs • Addressing the needs of vulnerable workers (focus indigenous, and immigrant workers)

Eligibility

Any Canadian resident can apply to Applied Innovation and Proof and Prototyping as a principal applicant, including workers, employers, and academic researchers. Academic researchers who are affiliated with a college, university, or research institution may apply but require industry member collaborations or a non-academic partner on the research team.

For the Exploratory Research grants, the principal applicant must be an academic researcher based in (or formally affiliated with) a Canadian university or a Canadian research institution.

All applicants must propose research topics that align with our research priorities.

For more information: [Visit the WorkSafeBC Innovation research grants web page](#)



Call for proposals: *Spencer Foundation Large Research Grants on Education*

Intent to Apply deadline: **January 14, 2025**

Full proposal deadline: **February 11, 2025**

Value: \$125,000 to \$500,000 USD

Duration: 1 to 5 years

The Large Research Grants on Education Program supports education research projects that will contribute to the improvement of education, broadly conceived, with budgets ranging from \$125,000 up through \$500,000 for projects ranging from one to five years. We accept applications twice a year.

This program is “field-initiated,” meaning that proposal submissions are not in response to a specific request for a particular research topic, discipline, design, or method. Our goal for this program is to support rigorous, intellectually ambitious and technically sound research that is relevant to the most pressing questions and compelling opportunities in education. We seek to support scholarship that develops new foundational knowledge that may have a lasting impact on educational discourse.

We recognize that learning occurs across the life course as well as across settings— from the classroom to the workplace, to family and community contexts and even onto the playing field—any of which may, in the right circumstance, provide the basis for rewarding study that makes significant contributions to the field. We value work that fosters creative and open-minded scholarship, engages in deep inquiry, and examines robust questions related to education. To this end, this program supports proposals from multiple disciplinary and methodological perspectives, both domestically and internationally, from scholars at various stages in their career. We anticipate that proposals will span a wide range of topics and disciplines that innovatively investigate questions central to education, including for example education, anthropology, philosophy, psychology, sociology, law, economics, history, or neuroscience, amongst others.

Moreover, we expect and welcome methodological diversity in answering pressing questions; thus, we are open to projects that utilize a wide array of research methods including quantitative, qualitative, mixed-methods, ethnographies, design-based research, participatory methods, historical research, to name a few. We are open to projects that might incorporate data from multiple and varied sources, span a sufficient length of time as to achieve a depth of understanding, or work closely with practitioners or community members over the life of the project. In addition, we welcome proposals submitted by multidisciplinary and multigenerational teams who are positioned to both contribute to the project as well as contribute to the teaching and learning of fellow team members.

Finally, we encourage teams to thoughtfully consider and describe plans regarding the trajectories of their project’s findings, implications, and potential effects, especially how the knowledge may be shared and utilized across the field in practice, policy making, or with broader publics.

Eligibility

Proposals to the Research Grants on Education program must be for academic research projects that aim to study education. Proposals for activities other than research are not eligible (e.g., program evaluations, professional development, curriculum development, scholarships, capital projects). Additionally, proposals for research studies focused on areas other than education, are not eligible.

Proposals are accepted from the U.S. and internationally, however all proposals must be submitted in English and budgets must be proposed in U.S. Dollars.

PIs and Co-PIs may not submit more than one research proposal to the Spencer Foundation at a time. This restriction applies to the Small Grants Program, Large Grants Program, Racial Equity Research Grants Program, and Research-Practice Partnership Program.

For more information: [Visit the Spencer Foundation Large Research Grants on Education web page](#)

Call for applications: Real Estate Foundation of BC - General Grants

Application deadline: **January 28, 2025**

Value: No set amount

Duration: Not specified

The Real Estate Foundation of BC makes grants to support projects that advance sustainability, equity, and social justice in relation to land use and real estate practices in BC. General grants can fund projects led by First Nations, non-profits, and other organizations working on projects relating to land use or real estate in BC.

REFBC grants can support:

- Law and policy reform
- Applied research
- Public education
- Community engagement
- Professional education

We prioritize grants to Indigenous-led organizations. We are particularly interested in projects that support Indigenous rights and interests in land use and real estate. We are also interested in projects that advance justice, equity, diversity, and inclusion for racialized and other communities systematically excluded from land use decision-making.

Our grants budget fluctuates from year to year, based on the income we receive from interest earned on pooled real estate deposits. In the past five years, we've granted an average of \$6.3 million per year. Last year, 65% of our grant funding went to Indigenous-led organizations.

Priority areas

REFBC grants support work in five areas. Projects may span more than one priority.

- **Land use** - Relationships between people and the land promote thriving, resilient communities and natural environments for current and future generations.
- **Fresh water** - Freshwater ecosystems are healthy, sustainable, and intrinsically valued
- **Built environments** - Built environments support inclusive, thriving communities and a high quality of life without undermining natural systems
- **Food sovereignty** - Land is protected and enhanced to support thriving local sustainable food systems. Food sovereignty is enhanced for communities, particularly communities historically denied control over food systems through colonization.
- **Real estate profession** - Real estate professionals, industry groups, and their partners demonstrate leadership and innovation in advancing sustainable and equitable land use, built environments, climate action, and real estate practices that improve quality of life for all residents.

REFBC supports applied research and education. By applied, we mean research and education that answers specific community-driven questions, addresses a community-identified problem or gap, and includes community-level implementation.

Ultimately, we are interested in research that helps us understand issues or problems and will help contribute to practical solutions that will be applied on the ground. Universities and colleges should note our grants are not intended to support pure or theoretical research that is exploratory in nature.

Funding

REFBC awards grants for a wide range of projects. There is no “typical” grant and the amount of funding given will vary depending on the type of work, the project location(s), and the number of partners and funders involved.

- For small, grassroots projects, grants tend to range from \$5,000 to \$50,000.
- For larger or province-wide projects, grants tend to range from \$50,000 to over \$100,000.
- For complex, multi-year programs and initiatives, grants tend to range from \$100,000 to \$300,000.

For more information: [Visit the REFBC funding web pages](#)

Call for applications: Friends of Ecological Reserves research funding

Application deadline: **January 31, 2025** (mail-in applications must be received by this date)

Value: \$500 to \$2000

Duration: 1 to multiple years

Each year, the Friends of Ecological Reserves welcomes applications for funding in support of biological and ecological research related to ecological reserves in British Columbia. One of the major aims of the Ecological Reserve Program is to encourage the involvement of scientists in research on the reserves. To carry out research in an ecological reserve, a [permit](#) is required and reports are submitted to BC Parks, and to the Friends of Ecological Reserves for entry in their archive.

Note: BC Parks can be slow to process permit requests, so the permit application must be submitted early in 2025 in order to get a reply for the summer field season.

What are ecological reserves?

Ecological reserves are areas selected to preserve representative and special natural ecosystems, plant and animal species, features, and phenomena. Scientific research and educational purposes are the principal uses of ecological reserves.

Ecological reserves are established for the:

- preservation of representative examples of British Columbia's ecosystems;
- protection of rare and endangered plants and animals in their natural habitat;
- preservation of unique, rare, or outstanding botanical, zoological or geological phenomena;
- perpetuation of important genetic resources; and
- scientific research and educational uses associated with the natural environment.

You can see a [list of the ecological reserves here](#).

Research and education in ecological reserves

Scientific research is one of the principal functions of ecological reserves. Many types of research, particularly in the ecological field, require the establishment of permanent plots or observation stations to which the investigator can return to over time. Such types of research and other basic research related to the study of natural processes are encouraged in ecological reserves, provided it is not detrimental to the values of the ecological reserve. Researchers often prefer to use sites that already have an existing stock of research data upon which to build. Past research has established a foundation of data upon which new research activities can be built.

Ecological reserves also offer opportunities for a wide range of educational activities ranging from simple observation and nature interpretation to the teaching of complex ecological processes. Under [permit](#), all levels and institutions of education may visit all but a few very sensitive ecological reserves. As surrounding environments are progressively altered by human activities, ecological reserves will assume an ever increasing significance for the demonstration and study of original ecosystems.

For details of research being done on each ecological reserve, including maps, photos, reports, species lists, etc, [visit the Ecoreserves listing](#).

For more information: [Visit the Friends of Ecological Reserves research grants web page](#).



'Winter Solstice' by Myles Davidson is used under [Creative Commons license CC BY-NC 2.0](#).



Call for proposals: *SSHRC Destination Horizon Grants*

Proposal deadline: **January 22, May 22, and September 22, 2025**

Value: Up to \$15,000

Duration: 1 year

SSHRC has launched a new funding opportunity: [Destination Horizon Grants](#). Valued at \$15,000 for one year, these grants are intended to support researchers affiliated with eligible Canadian postsecondary institutions to build capacity, foster existing partnerships, and further develop networks and/or consortia with European Union and other “associated countries” researchers, with the ultimate goal of applying to [Horizon Europe](#)—Pillar II calls for proposals.

This funding opportunity follows [the agreement signed by the Government of Canada and the European Commission](#) allowing for increased Canadian participation in Horizon Europe under Pillar 2. This agreement provides Canadians with greater access to Horizon Europe.

Please note that a postsecondary institution may only submit up to three Destination Horizon Grant applications for a given deadline. All applications deemed eligible will be entered into a randomized selection process to determine awards. An eligible application that is not randomly selected for an award may be resubmitted for a future competition.

Description

Destination Horizon Grants support researchers affiliated with eligible Canadian postsecondary institutions to build capacity, foster existing partnerships, and further develop networks and/or consortia with European Union and other “associated countries” researchers, with the ultimate goal of applying to Horizon Europe—Pillar II calls for proposals.

Horizon Europe is the EU’s key funding program for research and innovation, with a budget of €95.5 billion. It offers significant opportunities to access new knowledge, partners, markets, customers and suppliers. In November 2023, the Government of Canada closed substantive negotiations with the European Commission to join Horizon Europe as an associated country under Pillar II: Global challenges and European industrial competitiveness. While Canadians could previously participate in all Horizon Europe calls that were open to international partners, they would have had to largely secure their own funding to participate in a given project. With associated country status, Canadians can now access funding directly from the EU.

Destination Horizon Grants proposals are expected to respond to the objectives of the [Research Partnerships program](#), which are to:

- strengthen knowledge and understanding by leveraging perspectives from across multiple disciplines and sectors;
- support collaboration among postsecondary institutions, and between postsecondary institutions and organizations from the public, private and not-for-profit sectors, to co-create knowledge and increase use of research outputs;

- mobilize research knowledge, within academia and other sectors, that can lead to intellectual, cultural, social and economic outputs and outcomes;
- increase the accessibility and use of research knowledge within and beyond the postsecondary sector; and
- support a high-quality training experience for students and/or postdoctoral researchers.

Destination Horizon Grants are not intended to support implementation of Horizon Europe projects. Instead, the grants support activities between researchers that facilitate:

- disciplinary and/or interdisciplinary exchanges;
- scholarly exchanges;
- intersectoral exchanges between academic researchers and practitioners from the public, private and/or not-for-profit sectors; and/or
- international research collaboration and scholarly exchanges between researchers affiliated with Canadian postsecondary institutions and researchers, students and non-academic partners from the EU and other associated countries.

Note that SSHRC will not fund the full cost of any Destination Horizon Grant. Additional support in the form of eligible cash contributions equivalent to 100% of the amount requested from SSHRC must come from the host institution.

Eligibility

Most SSHRC funding is awarded through open competitions. Proposals can involve any disciplines, thematic areas, approaches or subject areas eligible for SSHRC funding. See the [guidelines on subject matter eligibility](#) for more information.

Projects whose primary objective is to conduct research activities (e.g., literature reviews, field work, data collection, interviews) are not eligible for funding under this funding opportunity.

To be eligible for this funding opportunity, applicants must demonstrate:

- their eligible affiliation and primary affiliation in the social sciences or humanities;
- their readiness to further develop networks and/or consortia with EU and other associated countries' researchers, with the ultimate goal of applying to a Horizon Europe—Pillar II call;
- eligible budget requests; and
- 100% matching cash contributions from the host institution.

Applications can be submitted by an individual researcher or a team of researchers (consisting of one applicant and one or more co-applicants and/or collaborators). Postdoctoral researchers and students are not eligible for applicant or co-applicant status for a Destination Horizon Grant.

For more information: [Visit the SSHRC Destination Horizon Grants web page](#)



Call for proposals: SSHRC Connection Grants

Application deadline: February 1, 2025

Value: Events: \$7,000 to \$25,000
Outreach activities: \$7,000 to \$50,000

Duration: 1 year

Connection Grants support events and outreach activities geared toward short-term, targeted [knowledge mobilization](#) initiatives. These events and activities represent opportunities to exchange knowledge and to engage with participants on research issues of value to them. Events and outreach activities funded by a Connection Grant can often serve as a first step toward more comprehensive and longer-term projects. Connection Grants are expected to respond to the objectives of the [Connection program](#).

Connection Grants support workshops, colloquiums, conferences, forums, summer institutes, or other events or outreach activities that facilitate:

- disciplinary and/or interdisciplinary exchanges in the social sciences and humanities;
- scholarly exchanges between those working in the social sciences and humanities and those working in other research fields;
- intersectoral exchanges between academic researchers in the social sciences and humanities and researchers and practitioners from the public, private and/or not-for-profit sectors; and/or
- international research collaboration and scholarly exchanges with researchers, students and non-academic partners from other countries.

Proposed events and outreach activities

- All activities must take place within 12 months of the start date indicated on the notice of award (see decision dates in the [funding cycle schedule](#)).
- Proposed events and outreach activities must produce timely and concrete deliverables, such as conference proceedings or other knowledge products developed for traditional formats and/or employing digital and/or multimedia formats (unless specifically intended to create new, longer-term linkages or to initiate collaboration).
- Proposed events and outreach activities can be one-time encounters or catalysts designed to lead to longer-term partnerships and/or sustained programs of scholarly research.

SSHRC welcomes applications involving [Indigenous research](#), as well as those involving [research-creation](#). To this regard, for Connection Grants support **events and outreach activities** related to research-creation and Indigenous research.

Research Data Management Capacity Building Initiative

Through this initiative, SSHRC will fund at least 10 meritorious Connection Grant proposals per competition to support the social sciences and humanities research community develop and adopt research data management standards, tools and skills. Learn more about the [Research Data Management Capacity Building Initiative](#). Candidates must indicate that they wish to be considered for an initiative, and explain why, in their application form.

For more information: [Visit the SSHRC Connection Grants web page](#)

Proposal deadline: February 3, 2025

Value: \$7,000 to \$75,000

Duration: 1 – 2 years

Insight Development Grants support research in its initial stages. The grants enable the development of new research questions, as well as experimentation with new methods, theoretical approaches and/or ideas. Funding is provided for short-term research development projects of up to two years that are proposed by individuals or teams.

Insight Development Grants foster research in its early stages but are not intended to support large-scale initiatives. Long-term support for research is offered through SSHRC's Insight Grants.

Insight Development Grants are expected to respond to the objectives of the [Insight research program](#).

Proposed projects can involve, but are not limited to, the following types of research activities:

- case studies
- pilot initiatives
- critical analyses of existing research

Projects can also involve national and international research collaboration, and the exploration of new ways of producing, structuring and mobilizing knowledge within and across disciplines and sectors.

Funding is available for two distinct categories of scholars:

- [Emerging scholars](#) who will develop new research questions and/or approaches. Such projects can build on and further the applicant's (or team's) graduate work and/or represent a continuation of their overall research trajectory. For the current competition, at least 50% of funds will be reserved for applications from emerging scholars.
- [Established scholars](#) who will explore new research questions and/or approaches that are distinct from the applicant's previous/ongoing research. Research projects should be clearly delimited and in the early stages of the research process. Insight Development Grant funding is not intended to support ongoing research for established scholars.

SSHRC welcomes applications involving [Indigenous research](#), as well as those involving [research-creation](#).

Future Challenge Areas

SSHRC invites all applicants to review [Imagining Canada's Future's](#) 16 future global challenges and to consider addressing one or more of these areas in their research proposal. This is not an evaluation criterion for merit review and does not offer additional or dedicated research funds for this funding opportunity.

Subject matter

Most SSHRC funding is awarded through open competitions. Proposals can involve any disciplines, thematic areas, approaches or subject areas eligible for SSHRC funding. See the guidelines on [subject matter eligibility](#) for more information.

Projects whose primary objective is curriculum development, preparation of teaching materials, program evaluation, organization of a conference or workshop, digitization of a collection or creation of a database are not eligible for funding under this funding opportunity.

For more information: [Visit the SSHRC Insight Development Grant web page](#)

Call for proposals: *CIHR Project Grants*

Registration deadline: **February 5, 2025**

Full application deadline: **March 5, 2025**

Value: Not specified

For the spring 2024 grants, the median grant amount awarded was \$918,000. The overall average amount awarded was \$193,225. ([See the full result data here.](#))

Duration: Not specified

For the spring 2024 grants, the overall average duration of successful grants was 4.42 years

The [Project Grant program](#) is designed to capture ideas with the greatest potential for important advances in fundamental or applied health-related knowledge, health care, health systems, and/or health outcomes by supporting projects of research proposed and conducted by individual researchers or groups of researchers in all areas of health. The best ideas may stem from new, incremental, innovative, and/or high-risk lines of inquiry or knowledge translation approaches.

Research Areas

The Project Grant program is open to applicants in all areas of health research that are aligned with the CIHR mandate: "To excel, according to internationally accepted standards of scientific excellence, in the creation of new knowledge and its translation into improved health for Canadians, more effective health services and products, and a strengthened Canadian health care system".

- [Global Health](#)
Applications focused on global health, or which include international collaborations are eligible. Applications focused in the field of global health that demonstrate that the proposed research project has the potential to improve health in Canada and/or the global community are accepted and encouraged as more than ever before, the health of Canadians is deeply intertwined with the health of people around the world.
- [Indigenous Health Research](#)
Applications with a central focus on carrying out meaningful and culturally safe research involving Indigenous Peoples with the intent to promote health through research that is in keeping with Indigenous values and traditions and follows the [TCPS2 guidelines](#).
- **Interdisciplinary Research**
Applications involving interdisciplinary research are accepted and encouraged in all committees. However, the Social Sciences and Humanities Research Council (SSHRC), the Canadian Institutes of Health Research (CIHR), and the Natural Sciences and Engineering Research Council of Canada (NSERC) have formed a [Tri-Agency Interdisciplinary Peer Review Committee \(TAIPR\)](#), with the following mandate, specifically dedicated for the review of interdisciplinary research.
- [Specific Research Areas](#)
Priority Announcements (PAs) offer additional sources of funding for highly rated applications that are relevant to specific research areas. [Refer to the Project Grant: Fall 2024 Priority Announcements \(Specific Research Areas\) for further details.](#) The specific research areas include: aging; breast cancer research; cancer research; female athlete health; global health research; health and official languages in minority areas; human development, child, and youth health research; patient-oriented research and knowledge mobilization; and many more topics.

Funds available

CIHR and partner(s) financial contributions for this initiative are subject to availability of funds. The total amount available for the Fall 2024 and Spring 2025 Project Grant Competitions is \$650M. Within the investment allocated to each Project Grant competition, there will be a funding envelope of \$16.25M dedicated to large grants; \$14.95M (4.6%) dedicated to supporting applications with an Indigenous health research focus; and A portion of the competition budget will also be reserved to ensure that the proportion of grants funded is at least equal to the proportion of applications submitted by early career researchers (ECRs), female applicants, applicants submitting applications written in French, racialized applicants and applicants who self-identify as a person with a disability.

For more information: [Visit the CIHR Project Grant web page](#) and the [Project Grant Program page](#)

Call for proposals: SSHRC Partnership Grants—Stage 1

Proposal deadline: February 10, 2025

Value: Up to \$20,000 (Stage 1)
Up to \$2.5 million (Stage 2 - by invitation only)

Duration: 4 - 7 years

Partnership Grants are expected to respond to the objectives of the [Research Partnerships program](#). Proposals exclusively for [partnered research training initiatives](#) are expected to respond, instead, to the objectives of the [Research Training and Talent Development program](#).

These grants provide support for new and existing [formal partnerships](#) over four to seven years to advance research, research training and/or knowledge mobilization in the social sciences and humanities. This is done through mutual co-operation and sharing of intellectual leadership, as well as through resources as shown by cash and/or in-kind contributions.

Partnership Grants are intended for large teams of postsecondary institutions and/or organizations of various types that work in formal collaboration.

The quality of training, mentoring and employability plans for students and [emerging scholars](#) will be evaluated as an important part of the proposed initiative. SSHRC's [Guidelines for Effective Research Training](#) explain how students and emerging scholars can meaningfully participate in proposed initiatives.

The intellectual leadership and governance for a formal partnership can come from the research community and/or from partner organizations from the public, private and not-for-profit sectors. However, only an institution that meets the [institutional eligibility requirements](#) can administer the grant funding. For more information, see [Eligibility](#).

SSHRC's [Partnerships Tool-Kit](#) offers tools and resources to assist in the planning and implementation of your partnership.

Partnership Grants undergo a two-stage merit review process. This funding opportunity description applies to Stage 1 applications. Only applicants successful in the Partnership Grants—Stage 1 process are invited to apply in Stage 2.

Types of partnerships

There are two categories of partnerships that can request support:

- existing partnerships to foster new research and/or research-related partnership activities that are distinct from the partnership's previous/ongoing partnership activities; and
- new partnerships to foster new research and/or research-related partnership activities that are undertaken by partnerships in their initial stages.

Following is a list of possible formal partnership approaches. Applicants are in no way limited to these approaches, and are welcome to combine some of the features described below.

- **Disciplinary and interdisciplinary research partnerships:** Interinstitutional research initiatives designed to significantly contribute to advancing knowledge and understanding in the social sciences and/or humanities. While SSHRC welcomes proposals for interdisciplinary research partnerships involving natural sciences, engineering and/or health partner organizations, proposed partnerships of this nature must follow SSHRC's [subject matter eligibility guidelines](#).
- **Cross-sector co-creation of knowledge and understanding:** Partnerships that use ongoing collaboration and mutual learning to foster innovative research, training and the co-creation of new knowledge on critical issues of intellectual, social, economic and cultural significance.
- **Networks for research and/or related activities:** Networks designed to advance the innovative co-creation of knowledge, as well as training and mobilization of research, on critical issues of intellectual, social, economic and cultural significance.
- **Partnered knowledge mobilization:** Partnerships designed to synthesize, apply and mobilize new and existing social sciences and humanities research knowledge in accessible ways to build institutional capacity and increase the national and international impact and stature of Canadian research.
- **Partnered chairs:** Partnerships to nominate research chairs designed to advance research and/or related activities in a specific social sciences and/or humanities area. Partner organizations pool financial resources and suggest an amount of funds required from SSHRC. Proposals must show that a formal agreement exists between the partner organizations to maintain the chair position for a minimum of four years. Proposals must include the name of the suggested chairholder. For more information, see SSHRC's [Guidelines for Partnered Chairs](#).
- **Partnered research centres:** Partnerships to create or support a research centre designed to advance research and/or related activities in a specific social sciences and/or humanities area. Partner organizations pool financial resources and suggest an amount of funds required from SSHRC. Proposals must show that a formal agreement exists between the partner organizations to maintain the centre for a minimum of four years.
- **Partnered research training initiatives:** Partnerships designed to support the creation of innovative approaches that enrich research training experiences for students and postdoctoral researchers while enabling their transition to academic or non-academic workplace settings. For more information, see SSHRC's [Guidelines for Partnered Research Training Initiatives](#). These guidelines apply only to proposals that focus primarily on research training and must respond to the objectives of the [Research training and talent development program](#).

SSHRC welcomes applications involving [Indigenous research](#), as well as those involving [research-creation](#).

Salary research allowance

A [salary research allowance](#) can be requested for not-for-profit organizations involved in the partnership with an applicant, co-director or co-applicant on the team to release them from duties to their organization.

For more information: [Visit the SSHRC Partnership Grants web page](#)

Call for proposals: SSHRC, CIHR and Michael Smith Health Research BC Research on Research Joint Initiative

Proposal deadline: February 20, 2025

Value: Up to \$200,000

Duration: 3 years

Research on research, also known as metaresearch, is the application of rigorous methods and analysis to the practice of research itself—its methods, standards and evaluation (see expanded definition below). Founded in 2019, the Research on Research Institute (RoRI) is a consortium of research funders and institutes that undertakes projects that can support the work of funding organizations. RoRI gathers evidence and data; undertakes experiments; and develops tools to improve how research is funded, practiced, communicated and evaluated.

The three Canadian core partners of RoRI—SSHRC, the Canadian Institutes of Health Research (CIHR) and Michael Smith Health Research BC—have together launched this joint initiative as part of ongoing efforts to support metaresearch in the Canadian context. The goal of this joint initiative is to enhance national capacity for metaresearch, and bring Canadian expertise and perspectives into the international dialogue on improving research funding practices. Metaresearch is a vital element of social sciences and humanities research, as well as multidisciplinary research, as it allows greater insight into the ways in which research is conducted, evaluated and supported.

For the purposes of this joint initiative, metaresearch (also known in different contexts as research on research, metascience or the science of science) is defined as a field of research that draws on old and new disciplinary and methodological approaches to test, evaluate and experiment with different aspects of research systems, cultures and decision-making. It aims to ensure the full potential of research can be realized in ways that are rigorous, transparent, fair and evidence-informed. Metaresearch can be conducted by researchers in any disciplinary field.

This joint initiative aims to:

- build knowledge and understanding on metaresearch, i.e., the application of rigorous methods and analysis to the practice of research itself—its methods, incentives, standards and evaluation—and the practices of how that research is funded, communicated, applied and evaluated
- produce data on metaresearch that may have impacts on research and innovation policy and funding practices in Canada and other jurisdictions
- take part in knowledge mobilization among Canadian and international researchers, including members of RoRI's consortium, to contribute to the development of research and innovation policies and research funding practices;
- provide training for students and highly qualified personnel
- build collaborations among researchers working on metaresearch, both in Canada and internationally

Applications that align with [RoRI priority areas](#) as identified in the list of current RoRI projects (whether or not directly linked to those current [RoRI projects](#)) are welcome in this joint initiative, but the alignment is not mandatory.

Applicants are invited to submit applications dealing with metaresearch in any disciplinary context. Possible research areas supported within the objectives of this joint initiative may include (but are not limited to):

- research on talent and professional development, including studying the effectiveness of interventions in: training and skills, talent retention, encouragement of entrepreneurship, and/or training and professional development assessment methods in research contexts

- research on allocation of research funding, including different peer review methodologies and different modes of funding (e.g., scholarships, fellowships, research grants), and their impacts on the distribution of research funds and associated research and career outcomes
- research integrity, including issues of reproducibility and the impact of interventions such as preregistration, open data, research data management, and reproducible code
- research on research infrastructure, including physical, digital and human infrastructures
- improving the dissemination of research outputs and their impact, including the role of technology transfer offices, varying publication practices, conferences and knowledge dissemination platforms
- understanding research impact, including improving the nuance with which the impact of research projects and programs can be defined and measured, and under what conditions various approaches to research facilitate meaningful use of evidence
- understanding the impacts of AI on the research ecosystem

SSHRC welcomes applications involving Indigenous research, as well as those involving research-creation.

Subject matter

Proposals may be led by researchers from any discipline, and may involve any disciplines, thematic areas, approaches or subject areas, provided the primary discipline and objective of the proposal is metaresearch.

Projects whose primary objective is curriculum development, preparation of teaching materials, organization of a conference or workshop, digitization of a collection or creation of a database are not eligible for funding under this funding opportunity.

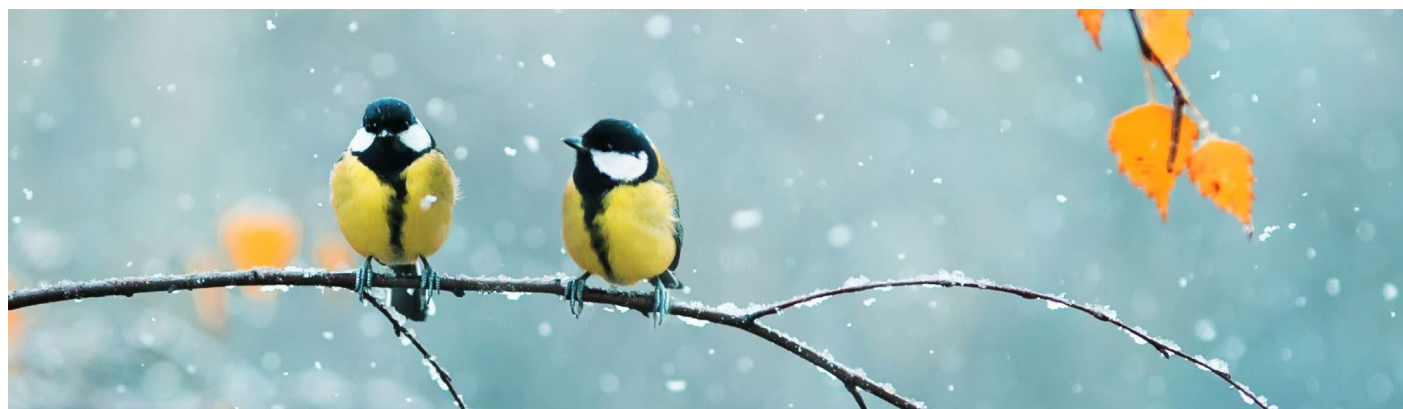
Webinars

Two informational webinars about the Research on Research Joint Initiative between the Social Sciences and Humanities Research Council (SSHRC), the Canadian Institutes of Health Research, and Michael Smith Health Research BC have been scheduled. The webinars will be held via MS Teams at the following dates and times:

Webinar	Date	MS Teams link
Research on Research Joint Initiative (English)	December 6th, 2024 1:00-2:00 pm, ET	MS Teams Link Webinar number: 295 950 382 612 Webinar passcode: jNX9kT
L'Initiative conjointe de recherche sur la recherche (Français)	Le 9 décembre 2024, de 1h00 à 2h00, HE	Lien MS Teams Numéro du webinaire : 213 469 677 455 Mot de passe du webinaire : VumsDD

For more information:

[Visit the Research on Research Joint Initiative web page](#)



Call for proposals: SSHRC Partnership Engage Grants

Proposal deadline: March 15, 2025

Value: \$7,000 to \$25,000

Duration: 1 year

Partnership Engage Grants provide short-term and timely support for partnered research activities that will inform decision making at a single partner organization from the public, private or not-for-profit sector. The small-scale, stakeholder-driven partnerships supported through Partnership Engage Grants are meant to respond to immediate needs and time constraints facing organizations in non-academic sectors. In addressing an organization-specific need, challenge and/or opportunity, these partnerships let non-academic organizations and postsecondary researchers access each other's unique knowledge, expertise and capabilities on topics of mutual interest.

Partnership Engage Grants are expected to respond to the objectives of:

- the [Insight program](#) (to build knowledge; support new approaches to research; provide research training for students; fund research expertise that relates to societal challenges and opportunities; and mobilize research knowledge) and
- the [Connection program](#) (to share research knowledge; increase accessibility of research knowledge among all audiences; build reciprocal relationships among researchers; develop research networks and tools; and to make those networks and tools available to non-academic audiences.) However, Partnership Engage Grants cannot respond exclusively to the objectives of the Connection program.

SSHRC welcomes applications involving [Indigenous research](#), as well as those involving [research-creation](#).

See SSHRC's [Partnerships Tool-Kit](#) to assist in the planning and implementation of your partnership.

Types of partnerships

Following are some possible formal partnership approaches. Applicants are in no way limited to these approaches and are welcome to combine some of the features described below.

- **Cross-sector co-creation of knowledge and understanding:** Partnerships to foster innovative research, training and the co-creation of new knowledge on critical issues of intellectual, social, economic and cultural significance.
- **Partnered knowledge mobilization:** Partnerships designed to synthesize, apply and mobilize new and existing social sciences and humanities research knowledge in accessible ways to build institutional capacity and to increase the national and international impact and stature of Canadian research.

Partner organizations

Only one Canadian or international organization from the public, private or not-for-profit sector can be involved as a partner organization. Postsecondary institutions and scholarly associations are not eligible as partner organizations. Organizations collaborating with postsecondary institutions can be considered eligible as long as they are a separate entity from the postsecondary institution (i.e., a stand-alone organization in the non-profit, private or public sector). The partner organization must be at arm's length (independent) from the academic institution and the applicant.

For more information: [Visit the SSHRC Partnership Engage Grants web page](#)

See all [upcoming SSHRC deadlines here](#), and the [integrated calendar of agency and interagency funding opportunities here](#).

Questions about your author rights, publishing, or promoting your research?

Contact [Cassandra Larose](#), Scholarly Communications Librarian, at 250-391-2600, ext. 4324.

Questions about your data management plan?

Contact [Amber Gallant](#), Data Services Librarian, at 250-391-2600, ext. 4433.

If you are interested in any of the above funding opportunities:

Please contact the [Office of Research Services](#) and we will assist you in the development of your proposal.

Please note that the principal investigator for any grant application submitted through Royal Roads University must be a core faculty member at RRU.

Spotlight

Equity, Diversity, and Inclusion in Research: EDI Training Tools (Part 2 of 2)

Clear and well-thought-out training programs for research teams can greatly benefit research proposals to funders. Here are a few of the free online tools that you can leverage for training in inclusive research design:

- [Unconscious Bias Training Module](#). This module explains what unconscious bias is, outlines how it can affect us, and suggests ways to mitigate the influence of unconscious bias. While this module focuses on an audience of peer reviewers, the core concepts are clearly explained and provide a good foundation for further conversation with your team.
- [Gender-Based Analysis Plus](#). This link will take you to the GBA+ course online. GBA+ is a process through which researchers can understand who could be impacted by their research. It teaches users to identify how their research could better meet the diverse needs of the people most impacted and can help researchers to anticipate and mitigate potential barriers to accessing or benefitting from the initiative.
- [Employment Equity Toolkit](#). This toolkit, provided by British Columbia's Office of Human Rights Commissioner, discusses the effects of systemic discrimination that we see in the labour market today. Research teams can use this toolkit to build equitable hiring practices, develop practices that address discrimination, and understand accommodation and access needs.
- [Developing Antiracist Research from Research Questions to Dissemination](#). This special section of the Journal of the Society for Social Work and Research provides "Principles, Challenges, and Recommendations for Dismantling Racism Through Research", providing guiding principles, discussing antiracism and advocacy in the production of knowledge, and providing recommendations and starting points for various roles in research.

To see EDI Training Tools part 1, please refer to the e-bulletin from August 30th, 2024.

Webinar date: December 9th, 2024, from 11:00 am to 12:00 pm noon Pacific time

Responsible Research Begins with Learning Key Norms, Guidelines, and Policies

Join the Office of Research Services at Kwantlen Polytechnic University to gain insights from Dr. Grace Kelly, an expert from the Secretariat on RCR, on essential requirements for ethical and compliant research.

What You'll Learn:

- Fundamentals of RCR
- Researchers Responsibilities
- Navigating Compliance with the [Tri-Agency Framework: RCR](#)

Intended Audience

The webinar is open to any individuals involved in research at higher education institutions, including faculty, researchers, staff, students, and postdoctoral scholars.

Meet the Speaker

Dr. Grace Kelly is the senior advisor responsible for conducting research for the Secretariat on Responsible Conduct of Research. Since joining the Secretariat in 2022, Grace has played a key role in the agencies' commitment to promoting and fostering a culture of responsible research.

For more information and to register: [Visit the Kwantlen RCR webinar web page](#)

Questions about anything in the Research e-bulletin? Contact the [Office of Research Services](#)